

For all heating systems

HEIFI-Soft

Portable softened water filling unit

Ideal for use in single and multi family residential units and with systems of up to 100 kW capacity (depending on incoming water hardness). The HEIFI-SOFT softens the water destined for the heating system down to the required level and even fulfils the rigid regulations required by the German VDI 2035 norm. The HEIFI-SOFT and HEIFI-SOFT REGENERATION UNIT are sold as separate items. After use, the HEIFI-SOFT bottle can be connected up to the regeneration unit and recharged. Accessories include a carry-case, water meter and HEIFI-FÜL. HEIFI-SOFT units can also be integrated into fixed installation systems.

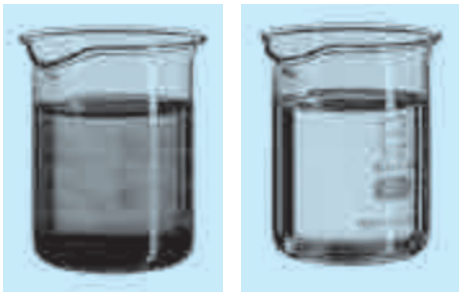


HEIFI-Soft

Regeneration unit

The ion exchange resin in the units is sufficient for use in approx. 3 single residential until it units needs regeneration. The HEIFI REGENERATION UNIT fulfils exactly that purpose leaving the HEIFI-SOFT unit back ready for action after a mere 1 hour regeneration, using only 800 gr. of salt.





Left:
Untreated
heating water

Right:
Treated
heating water

The problem:

The use of untreated raw water in heating systems is limited. As you will see from the operating instructions, most manufacturers demand certain water standards to avoid the following risks.

1. Lime-scale build-up

Carbon hardness dissolved in the top up water precipitates when heated and forms limescale in the system. This, in turn, affects the levels of heat transfer in the system and can lead to damage due to overheating.

2. Corrosion

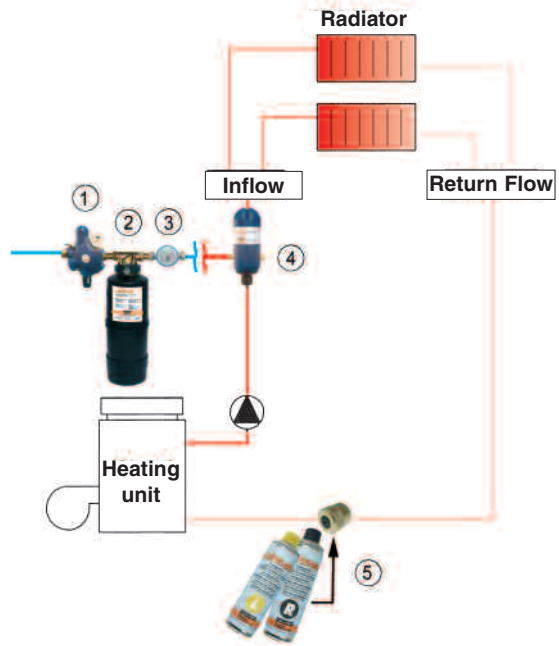
The combination of low pH-values and high temperatures encourages the spread of corrosion on metal elements within the system. Even low levels of oxygen present in the water supply will lead to corrosion to metal components in pipes and heaters under these conditions. This, in turn, causes discolouring of the circulation water and/or to sludge build-up in the system. Oxygen enters the system with the top up water and/or through leaky connections.

JUDO heating water treatment - The power system for your heating needs

- ◆ filters ◆ aerates ◆ direct mains connection including pipe separator and pressure reducer
- ◆ Automatic filling and top up = security and savings in time and money
- ◆ fill und top-up using softened water ◆ heating water is conditioned

We carry JUDO-products in stock

Installation diagram



Treatment of heating water up to approx. 50 kW:

- ① JUDO HEIFI-FÜL – automatic water top-up unit with pipe separator..
- ② JUDO HEIFI-SOFT – portable or fixed installation filling and top-up unit including...
- ③ ...water meter to monitor filling volumes.
- ④ JUDO HEIFI-TOP – backwash cleaning filter with integrated aeration unit for circulating water systems.
- ⑤ JUDO QUICK-DOS – Conditioner and cleaning agent for warm water circulation systems.

HEIFI-SOFT portable softening chamber (also suitable for fixed installation)
Type JHF-S Order no. 8068501

For fixed installation we recommend combining your HEIFI-SOFT with:

HEIFI-FÜL for first fill and top-up of heating systems
Type JHF-F (3/4") Order no 8060040

HEIFI-KOM – combining HEIFI-FÜL and HEIFI-TOP for an optimal process in filtration, filling and aeration
Type JHF-K (3/4" und 1") Order no. 8060051

HEIFI-SOFT connection set (only required for use with JHF-F)
Order no. 8068506

Carry-case for HEIFI-SOFT Order no. 8068505
Water meter Order no. 8068504

For customer service,
the HEIFI-SOFT is also
available ready
for the use with:
• carrying case
• water meter
• HEIFI-FÜL.

Type		JHF-SR
Connection	inch	1"
Salt storage container	kg	40
Salt consumption per regen.	kg	0,8
Operating pressure max.	bar	6
Operating temperature max.	°C/°F	30/86
Order no.		8068001



JUDO Wasseraufbereitung GmbH
P.O.Box 380 · D-71351 Winnenden
Germany
Tel. +49 (0)7195 / 692-0
Fax +49 (0)7195 / 692-110
E-Mail: export@judo.eu · www.judo.eu